



STUDY ABROAD



OUR COMMUNITY

2017 IMPACT REPORT

MISSION

ISEP facilitates student mobility for academic and cross-cultural learning through its worldwide membership network of higher education institutions

VISION

ISEP is a recognized world leader in international student mobility

VALUES

ACCESSIBILITY — for students of all backgrounds and means

DIVERSITY — of programs and participants

AFFORDABILITY — offering value for money, programs and experiences

QUALITY — in programs, service and systems

COLLABORATION — across our community

UNDERPINNING BELIEFS

Immersion and integration of students with local cultures and communities

The importance of language study and acquisition

The contribution of student mobility to global understanding and peace

The role of the Board, Council and members in assisting ISEP to succeed in a changing and challenging field

Our ISEP Global Office team is critical to achieving the organization's objectives

OUR COMMUNITY

Table of Contents

OUR COMMUNITY	Page 2
Message from the President and CEO	
OUR EMPOWERED COMMUNITY	Page 4
Message from the Chair of the Board of Directors	
OUR INCLUSIVE COMMUNITY	Page 6
Alumni Stories and Impact Data	
OUR ACCESSIBLE COMMUNITY	Page 12
ISEP Community Scholars and Founders Fellows	
Scholarships Awarded to ISEP Students	
OUR CONNECTED COMMUNITY	Page 16
ISEP Member Institutions	
ADVANCING OUR COMMUNITY	Page 20
2017 ISEP Conference: Advancing Inclusive Communities	
FUNDING OUR COMMUNITY	Page 22
Statements of Financial Position and Activities	
OUR ENGAGED COMMUNITY	Page 24
ISEP Board of Directors	
ISEP Council of Advisors	
ISEP Global Office Team	
OUR SUPPORTIVE COMMUNITY	Page 27
Contributions to ISEP	

OUR COMMUNITY

We partner to deliver value to our member community, and this year I want to highlight how ISEP works in partnership with our members and sister organizations. Since our founding in 1979 we have put partnership first – leveraging the talent, resources and expertise of members to provide academic and cultural homes for students across the U.S. and around the world.



Throughout 2017 we began several new partnerships within and beyond the ISEP membership community to expand access to international education and to better support our students.

BUILDING INCLUSIVITY

Empowering our ISEP team and our members was the focus of our 2017 conference: **Advancing Inclusive Communities**. Designed for members, by members, our program provided substantive discussion of leadership and expertise within our community. Through our external partnerships we empowered discussion and practical training.

Conference highlights included our focus on LGBTQ students in our workshop training with the **UCLA LGBTQ Resource Center** and the **Human Rights Campaign**. **Mobility International USA** teamed up with ISEP member **Beloit College** to deliver workshop training to expand inclusivity for mobility needs on our campuses. Trainers from **P3 Mental Health** delivered a session on Compassion in Sexual Assault and a workshop on Mental Health in Education Abroad. The **Global Leadership League** created an informed dialogue on women in leadership in international education.

EXPANDING ACCESS

Students from ISEP members now have access to full-time internships in twelve cities across ten countries through our new partnership with **Global Experiences**. With ISEP member special program prices, students can fit interning into their academic calendar across summer, fall and spring semesters. Our students benefit from immersive experiences when learning across cultures, both academically and through interning. Global Experiences has a proven record of working closely with students before, during and after their internship.

International education isn't limited to a one-time experience in another culture, and we began partnerships in 2017 that empowered more students to engage with the world through international cultural experiences. With **IIE's Global Experience and Training Program**, ISEP alumni from around the world now have the option to return to the U.S. for in depth training and research programs.

We hosted the U.S. State Department program, **Young Southeast Asian Leaders Initiative — YSEALI** in Washington, D.C. as part of their month-long educational program on Human Rights at ISEP member, **Kennesaw State University**. ISEP created a dynamic program in partnership with the **Belmont-Paul Women's Equality National Monument**, Freedom of Speech at the **Newseum**, training on intersectionality and policing, the **Holocaust Museum** and the **Human Rights Campaign**.

In 2018 our students will embark on their first internships with Global Experiences. Our ISEP Global Office team will continue to offer resources supporting inclusivity on our campuses – leveraging the expertise of our partners and our member community.

Through our membership model and our partnerships, we provide students with authentic and immersive experiences on campuses and internships. What we do reflects what we care about as a community: our members, our students and our world.



John S. Lucas, Ph.D.
President and CEO

OUR EMPOWERED COMMUNITY

With a renewed focus on serving all students to advance inclusive communities, 2017 was an empowering year for our ISEP members and the ISEP Global Office team. The emphasis on student inclusion, health, safety and well-being was a collaborative effort that strengthened our affiliation to our unique community. Throughout the year, in conversations, meetings, student advising and coordinator trainings, the ISEP Global Office partnered with members to develop and provide resources. During the ISEP conference, member institutions presented best practices, co-led workshops and plenaries—sharing their expertise across our member community.



MEMBERSHIP

Access to affordable study abroad expands across the globe each time a new institutional member joins ISEP, and 2017 was a banner year for growth. Membership in the ISEP community grew with the addition of 17 new members from Australia, China, Costa Rica, Indonesia, India, New Zealand, the U.K. and the U.S. With each new member, the ISEP community becomes stronger and more vibrant, providing more options in response to the interests and needs of the students we serve.

Not only has the ISEP community grown in scope and size, the value of ISEP membership and the unique benefits derived from being part of a global network have also increased. Enhancements to the ISEP website and a streamlined application process, more staff time dedicated to working with students and advisors, and ongoing training through webinars and campus visits have strengthened our processes and our programs, and provided valuable tools to ISEP coordinators. Furthermore, the implementation of an exemplary emergency response mechanism has been invaluable in providing the entire community with critical information in times of crisis and ensuring the well-being of ISEP students throughout the world.

SCHOLARSHIP

At the heart of our effort to make study abroad affordable for all students are our growing scholarship programs, the ISEP Community Scholarship and our ISEP Founders Fellowship. Both awards emphasize the importance of supporting inclusivity of students who are statistically underrepresented in study abroad. In addition, our fellowship is awarded to students who are driven to learn a language as a primary purpose of their international academic experience with ISEP.

Truly a milestone year for ISEP scholarships, the first scholarship recipients went abroad in the beginning of 2017. A total of 20 scholarships and 2 fellowships were awarded for both spring and fall semesters. This important new initiative is possible in part through the generosity of individuals and institutions throughout the ISEP community. It serves as yet another example of successful collaboration among members, the ISEP Council of Advisors, the Board of Directors, and the ISEP Global Office team to increase access and affordability for more students.

Through collaboration across institutions we accomplish our goal of immersive and inclusive study abroad. We will continue to work together to enhance and engage our member, student and partner community, in our efforts to fulfill our mission as a values first organization.



Heidi Gregori-Gahan
Assistant Provost, Center for International Programs, University of Southern Indiana
Chair, ISEP Board of Directors

OUR INCLUSIVE COMMUNITY

JADE WILLIAMS

from Howard University studied at American University of Sharjah

Jade Williams's time in the United Arab Emirates propelled her to negotiate an internal struggle between challenge and comfort. "I had to make my case to take courses in design, my major, because of the extensive competition for a small number of slots," she says. "I was the only foreign student in fine arts that semester. But Howard students don't back down."

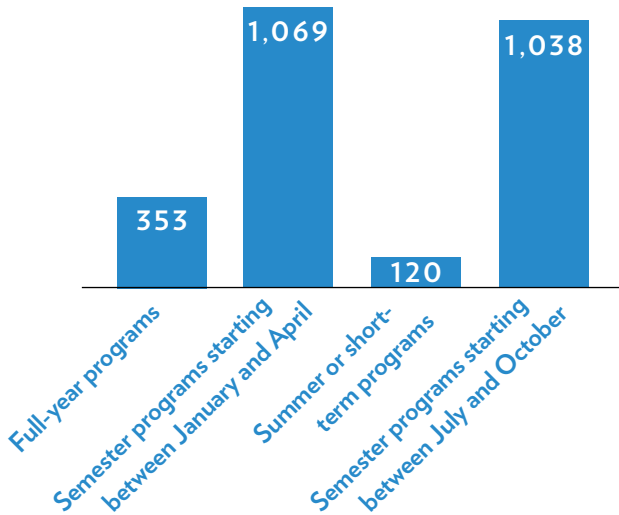
The tension between challenge and comfort extended to her coursework, her perception of social problems in both the UAE and the United States, and her personal connections. "I got a sense of classism, which contrasted with my perception of the United States. But at the same time, the UAE is a very diverse place. I made friends with Saudis and Sudanese people. Yet in spite of the

culture shift, I really loved a trip I took to Oman. During the trip, I reconnected with ISEP students after we had separated to pursue our own coursework."

Jade wants to pursue a career in the fashion industry, and the clothing in the Emirates also informed her sense of style. "When you're actually there living and seeing it every day, it almost becomes like home. It expanded my artistic eye in that sense. If I had advice for an ISEP student it would be do not worry. Do not let what other people tell you you're going to experience shade what happens. I'm a fashion blogger, but the restrictions helped me grow because I couldn't wear what I normally wear. Now I'm not afraid to wear or design something more conservative."

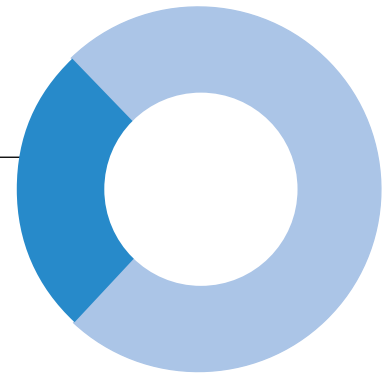


PROGRAM DURATIONS



FIRST TIME ABROAD

26%
of students
had not
traveled
abroad before
participating in an
ISEP program.



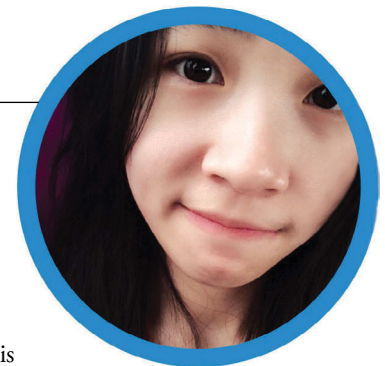
Results based on 582 responses to a voluntary application question.

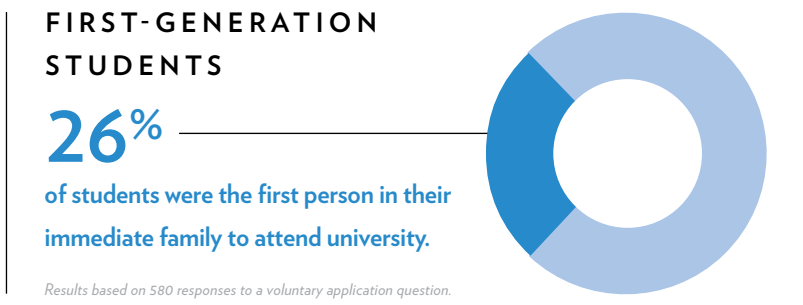
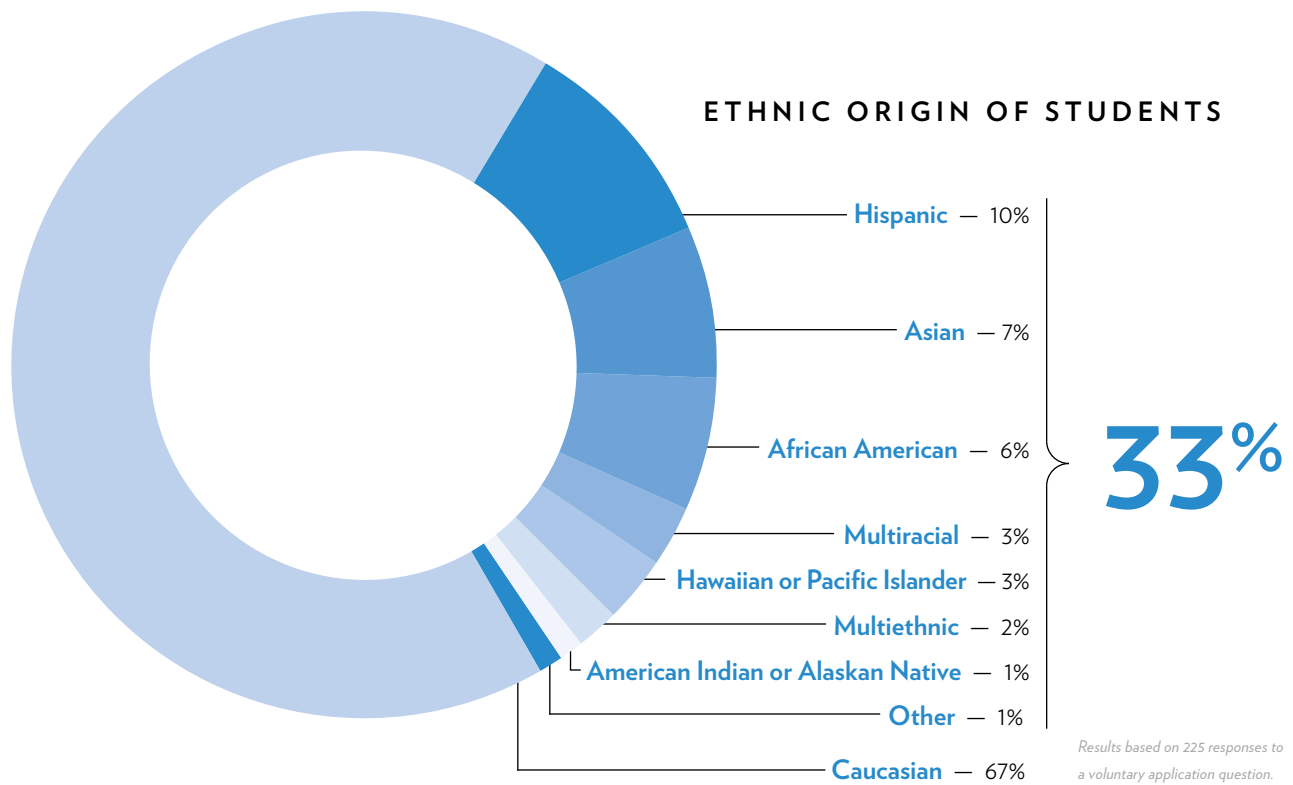
YULIN ZHU

*from Jiangxi University of Finance and Economics
studied at University of North Carolina Asheville*

Yulin Zhu is an accountant in China. Her multiple study abroad experiences were a valuable asset as she sought this position, but for Yulin, the personal connections she made were even more important. Her time at University of North Carolina Asheville was her second study abroad experience in the United States. It wasn't just the classes that resonated with Yulin. "All of my professors are really nice to me, they answered all my questions patiently and they helped me as long as they could. But I also made friends with some of my professors because they are awesome. I liked all of them as well as their classes. My time studying with ISEP helped me pursue connections because during my time at UNCA I learned some different perspectives from my professors, fellows, and my friends. That really helped me!"

Yulin visited culturally important sites such as the Biltmore Estate and explored the unique culture of North Carolina. All of this was a part of a larger project of connecting to his host. His experience was about making bonds and friendships that stretch across oceans and continents. He is still friends with people from his ISEP program, and it was hard to say goodbye. "My funniest times as a student were times with my friends. They took me to places I had never been before, we cooked together, we chatted, we played games with each other. I love all my friends I made through ISEP."





NADA EL MALIKI

from Al Akhawayn University studied at University of Seoul

If you're studying in Seoul, Nada El Maliki advises you to reach out to Koreans around you and make friends. To that end, she also suggests that students make sure to learn the Korean alphabet. It's one of the

easier ones she has encountered. "Trust me, I speak five languages," she says with a smile.

International education was not something new for Nada as she had specialized in education at her home in Morocco. But in her words, studying in Korea changed her viewpoint. "Something

CARTER HABEEB

from Maryville College, studied at American University of Sharjah

Carter Habeeb never expected studying abroad to transform him. Yet studying at American University of Sharjah did exactly that. He says, “I wasn’t necessarily envisioning this when I left Maryville College for the semester, but the time abroad really lit a spark in me that pushed me to where I am today.”

The benefits that came with this spark included academic, emotional and career payoffs. “One of the biggest benefits I had from studying abroad was being able to study a subject I would not have been able to study at my home institution. My favorite class was ‘War and Peace in the Middle East.’”

Carter took classes with people from all over the Middle East, making friends with a broad range of individuals from

many different countries. “I remember so many funny moments studying abroad. The Middle East became real to me during my time abroad there.”

“Now I’m a master’s student studying international education at American University,” he says while crediting his time with ISEP, “Studying abroad definitely helped me to reach where I am now.”

Carter situates ISEP in his long-term growth as a person, helping direct and focus his career as he also learned about himself. “I will remember ISEP as an



experience that allowed me to truly grow and develop as a person by letting me figure out who I am and where I want to spend the rest of my life.”

clicked in my mind where I realized that I preferred reading non-fiction. For the first time in my academic career, I chose something that was against mainstream ideas in my surroundings and culture and I developed a passion for it.”

Nada’s approach in the class has paid dividends.

Her success in studying in Korea led to her working at a startup, which she directly credits to her experience in Seoul. She takes full advantage of the opportunities that ISEP gave her.

MARIA NIECHODIWICZ

from Nebraska Wesleyan University studied at University of Hyderabad

Maria Niechodiwicz's time studying religion at the University of Hyderabad was, in her own words, "a life-changing experience." She engaged with her religious studies academic work, but what really stuck with her was her ability to cultivate relationships across cultures. "Getting to know local students, developing relationships, and visiting local families made the deepest impact on me," she says. "And understanding their religious practices on a one-on-one level was so important in cultivating those connections."

Maria experienced culture shock coming back to Nebraska for senior year. The best way she found of dealing with it was to keep traveling. Travel propelled her to continue building cultural

bridges, which led to a position working in China after graduation. That work focused on human trafficking, women's issues and coordinating with local organizations. China was almost as hard to leave as Hyderabad, because she says, "I never want to forget my experiences studying abroad." But the friendships she built remain with her.

Her time abroad in Asia led to a nutritional outreach program at a local church, working on issues of food access and race in the United States. "The thread that runs through my study abroad



experiences and current career has been community and how to engage my religious studies and relationship-building experience. Going to India allowed me to be open to similarities, assets and how people connect to religious understandings."

JEONGEUN KIM

from Hanyang University studied at Mälardalen University

For JeongEun Kim, ISEP changed the range of possibilities for her academic career. "Without ISEP, I would not have been able to study in Sweden," she says. "But furthermore, with ISEP's Community Scholarship I could explore the colorful culture of Northern European countries. In my case, the average cost of living in Sweden is more expensive

than Seoul, so I was so lucky to find the ISEP program and obtain the scholarship."

But it was not just the immediate opening of doors that allowed JeongEun to excel during her time at Mälardalen. She felt encouraged by the broad range of support that ISEP offers to students. "The

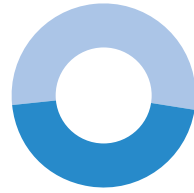
STUDENTS WHO DEMONSTRATE FINANCIAL NEED FOR THEIR ISEP PROGRAMS



58%

of respondents utilized

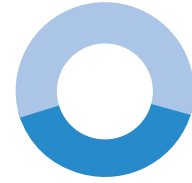
**Funding From
Family**



46%

of respondents utilized

Personal Savings



41%

of respondents utilized

**Government
Funding**



32%

of respondents utilized

Scholarships



15%

of respondents utilized

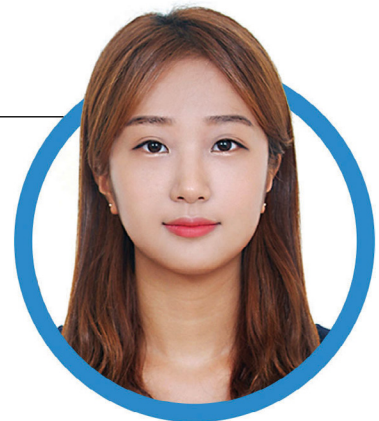
Loans

Results based on 594 responses to a voluntary ISEP application question.

first thing I realized is that ISEP's website is really helpful. There are many resources that I could use to prepare for studying abroad such as country information, cost and security."

JeongEun's time abroad focused on accounting and statistics courses, which connect to her focus on

economics. But her opportunity to study abroad with a Community Scholarship made such a deep impact that a return might be in her future. "I am seriously considering more studies in Sweden."



OUR ACCESSIBLE COMMUNITY

ISEP Scholarship Recipients

2017 marked our second year awarding the ISEP Community Scholarship and ISEP Founders Fellowship. These scholarships assist students from ISEP member institutions with a demonstrated financial need in making their goals to study abroad a reality. The awards were made possible by the generosity of community members and support our mission to extend access and affordability to study abroad. These scholarships specifically focus on awarding funds to those who are statistically underrepresented in study abroad.



RYAN TORRES

FALL 2017 ISEP FOUNDERS FELLOW

Ryan is from Fort Lewis College in the U.S. and studied at Universidad Americana in Nicaragua.



ELIZABETH KELL

SPRING 2018 ISEP FOUNDERS FELLOW

Elizabeth is from Agnes Scott College in the U.S. and studied at Università Cattolica del Sacro Cuore in Italy.

FALL 2017 ISEP COMMUNITY SCHOLARS

Mikaela Bjoerklind Roos from North Park University in the U.S. studied at Tokyo International University in Japan.

Lacey Carlson from Northeastern State University in the U.S. studied at Universidad de Vigo in Spain.

Caitlin Huynh from Virginia Tech in the U.S. studied at Université de Picardie Jules Verne in France.

Kirsten Kaufhold from Technische Universität Dortmund in Germany studied at Agnes Scott College in the U.S.

Katharina Lenz from Karl-Franzens Universität Graz in Austria studied at Universidad Católica del Uruguay in Uruguay.

Sylvie Messavussu from Lake Forest College in the U.S. studied at Aix-Marseille Université in France.

Bailey Sowka from University of North Carolina Asheville in the U.S. studied at Université de Picardie Jules Verne in France.

Mary Topper from University of North Carolina Asheville in the U.S. studied at Université de Picardie Jules Verne in France.

Andi Utter from St. Edward's University in the U.S. studied at University of Botswana in Botswana.

Florian Volz from Leiden University in the Netherlands studied at Rider University in the U.S.

SPRING 2018 ISEP COMMUNITY SCHOLARS

Salma Banda from University of Nebraska Omaha in the U.S. studied at Universidad de Almería in Spain.

Tierin Burrow from Rhodes College in the U.S. studied at Massey University in New Zealand.

Amy Dinh from University of Nebraska Omaha in the U.S. studied at University of Seoul in South Korea.

Angel Geller from Nebraska Wesleyan University in the U.S. studied at University of Waikato in New Zealand.

Carolina Gutierrez from UPAEP University in Mexico studied at Universidad de Murcia in Spain.

Taylor James from Agnes Scott College in the U.S. studied at University of Johannesburg in South Africa.

Julia Miller from Agnes Scott College in the U.S. studied at Tokyo International University in Japan.

Julia Monroe from Virginia Tech in the U.S. studied at Universidad de Murcia in Spain.

Patrick Sewell from University of Evansville in the U.S. studied at University of Turku in Finland.

Ilya Turchaninov from University of Alaska Southeast in the U.S. studied at Universidad de Vigo in Spain.

Scholarships Awarded in 2017

Join us in congratulating these ISEP students recognized in 2017.

SCHOLARSHIP

2017 AWARDS

Annette Kade Scholarship

This scholarship recognizes students from U.S. ISEP member institutions planning to study in French or German at a member institution in Austria, France, the French Antilles, Germany, Reunion Island or Switzerland. Scholarships are available to students with financial need and an interest in learning French or German.

This award recognized 37 ISEP students with scholarships to study in 4 countries. ● ● ● ● ●



Benjamin A. Gilman International Scholarship

The Gilman Scholarship Program offers awards for U.S. undergraduates receiving Federal Pell Grant funding at a two-year or four-year college or university to participate in study or intern abroad programs. Scholarships of up to US\$5,000 are awarded each year by the program.

This award recognized 57 ISEP students with scholarships to study in 26 countries. ● ● ● ● ●



Bridging Scholarship

Bridging Scholarships are awarded to students of any major studying abroad in Japan. Awards are typically US\$2,500 for semester programs or US\$4,000 for academic year programs. Applicants must be U.S. citizens enrolled as undergraduates at a U.S. institution before and during their time abroad.

This award recognized 6 ISEP students with scholarships to study in 1 country. ● ● ● ● ● ●



Explore the World Scholarship, Massey University

Every Massey University student who applies to study abroad with ISEP is automatically considered for an Explore the World Scholarship. These scholarships range in amount and can be used to cover the ISEP Exchange application fee.

This award recognized 5 ISEP students with scholarships to study in 4 countries. ● ● ● ● ●

Fund for Education Abroad

In an effort to make the demographics of U.S. undergraduates studying abroad reflect the rich diversity of the U.S. population, FEA expands access to study abroad by granting scholarships of up to US\$10,000 to students from groups underrepresented in study abroad and those destined for non-traditional locations.

This award recognized 1 ISEP student with a scholarship to study in 1 country. ●

OUR CONNECTED COMMUNITY

ISEP Member Institutions

In partnership with 339 member institutions in 53 countries, we connect students to high-quality programs.

AFRICA AND THE MIDDLE EAST

Botswana

University of Botswana

Ghana

University of Ghana

Morocco

Al Akhawayn University

Senegal

Institut d'Etudes Africaines de Dakar

South Africa

University of Johannesburg

United Arab Emirates

American University of Sharjah
City University College of Ajman

OCEANIA

Australia

CQUniversity
Deakin University •
La Trobe University
University of Canberra
University of Southern Queensland
University of Technology Sydney
Western Sydney University

Fiji

University of the South Pacific

New Zealand

Massey University
NMIT
University of Auckland •
University of Waikato •

ASIA

China

Jiangxi University of Finance and Economics
Shanghai University and Asia Exchange •
Sichuan University and Pacific Lutheran University

Hong Kong

The Chinese University of Hong Kong

India

Chitkara University •
Lovely Professional University
Symbiosis International University •
University of Hyderabad

Indonesia

BINUS University
Udayana University and Asia Exchange •

Japan

Chukyo University
Kansai Gaidai University
Nanzan University
Nihon University-Mishima
Rikkyo University
Ritsumeikan University
Tokyo International University
Toyo University

Malaysia

Universiti Pendidikan Sultan Idris

South Korea

Ajou University
Ewha Womans University
Hanyang University
Keimyung University
Korea University
University of Seoul
Yonsei University

Taiwan

Providence University

Thailand

Thammasat University

Vietnam

International University VNU-HCMC

EUROPE

Austria

Johannes Kepler Universität Linz
Karl-Franzens-Universität Graz
Technische Universität Graz
Universität Salzburg

Belgium

Artevelde University College
Vesalius College

Bulgaria

American University in Bulgaria

Czech Republic

Masaryk University

Denmark

Aalborg University

Estonia

University of Tartu

Finland

Abo Akademi University
University of Eastern Finland
University of Helsinki
University of Jyväskylä
University of Oulu
University of Tampere
University of Turku

France

Aix-Marseille Université
Institut d'Etudes Politiques de Rennes
Institut National des Sciences Appliquées de Lyon
Le Mans Université
Université d'Angers
Université de Caen
Université de Franche-Comté
Université de la Réunion
Université de Lille III
Université de Nantes
Université de Nice
Université de Picardie Jules Verne
Université de Savoie Mont Blanc
Université des Antilles
Université Jean Monnet de Saint-Etienne
Université le Havre Normandie
Université Paul Valéry Montpellier III

Germany

Gottfried Wilhelm Leibniz Universität Hannover
Justus-Liebig-Universität Giessen
Karlsruhochschule International University
Katholische Universität Eichstätt-Ingolstadt
Philipps-Universität Marburg
Technische Universität Carolo-Wilhelmina zu Braunschweig
Technische Universität Dortmund
Universität Bielefeld
Universität Trier

Hungary

University of Debrecen

Italy

Accademia dell'Arte
Università Cattolica del Sacro Cuore
Università degli Studi di Pavia
Università degli Studi di Trieste
Università degli Studi di Urbino "Carlo Bo"

Latvia

University of Latvia

Lithuania

Vilnius University

Malta

University of Malta

Netherlands

Leiden University
Radboud University Nijmegen
Tilburg University
TIO University of Applied Sciences

Poland

Wroclaw University

Portugal

Universidade Lusófona de Humanidades e Tecnologias

Spain

Universidad Alfonso X El Sabio
Universidad Complutense de Madrid
Universidad de Almería
Universidad de Málaga
Universidad de Murcia
Universidad de Vigo
Universidad Pública de Navarra
Universitat Rovira i Virgili

Sweden

Linnaeus University
Luleå University of Technology
Mälardalen University
Södertörns högskola
University West

Switzerland

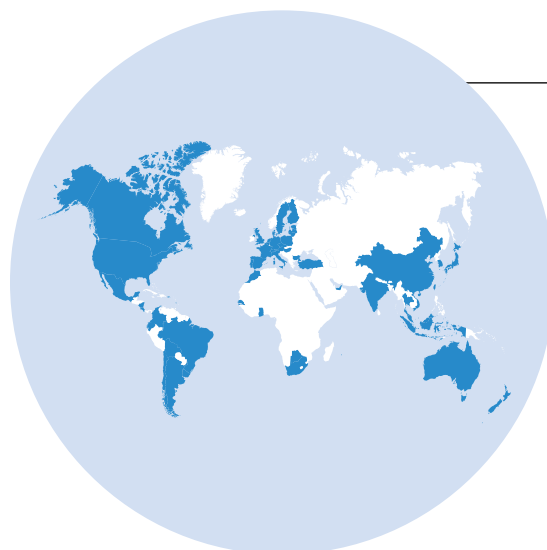
Universität Bern
Universität Zürich
Université de Fribourg
Université de Lausanne

Turkey

Okan University
Yasar University

United Kingdom

Edinburgh Napier University
Nottingham Trent University
Plymouth University
Ulster University
University of Bradford •
University of Bristol
University of Central Lancashire
University of Chester
University of Essex
University of Roehampton
University of Sunderland



THE ISEP COMMUNITY
CONSISTS OF

**339 member
institutions
in 53
countries.**

• *New member in 2017*

SOUTH AMERICA

Argentina

Universidad Blas Pascal
Universidad Católica de Córdoba
Universidad de Palermo
Universidad del Salvador

Bolivia

Universidad Privada Boliviana

Brazil

Fundação Armando Alvares Penteado

Chile

Pontificia Universidad Católica de Valparaíso
Universidad Católica del Norte
Universidad Técnica Federico Santa María

Colombia

Universidad del Norte
Universidad ICESI

Ecuador

Universidad Casa Granda

Uruguay

Universidad Católica del Uruguay

NORTH AND CENTRAL AMERICA

Canada

Brock University
Laurentian University
Thompson Rivers University
University of Regina

Costa Rica

Earth University •

Mexico

Instituto Tecnológico y de Estudios Superiores de Occidente
Tecnológico de Monterrey
Universidad de Guanajuato
Universidad de Monterrey
Universidad La Salle
Universidad Popular Autónoma del Estado de Puebla
Universidad Regiomontana

Nicaragua

Universidad Americana

UNITED STATES

Alabama

Tuskegee University

Alaska

University of Alaska Southeast

Arizona

Northern Arizona University

Arkansas

Arkansas State University
Hendrix College
Lyon College

California

California State University East Bay
California State University San Marcos
Chapman University
Dominican University of California
Pitzer College
San Diego State University
San Jose State University
University of the Pacific

Colorado

Colorado Mesa University
Fort Lewis College
Regis University
University of Denver
University of Northern Colorado

Connecticut

Southern Connecticut State University
Western Connecticut State University

Delaware

Wesley College

District of Columbia

Howard University

Florida

Eckerd College
Florida Memorial University
University of South Florida

Georgia

Agnes Scott College
Armstrong State University
Berry College
Georgia Southern University
Kennesaw State University
University of North Georgia
Valdosta State University

Idaho

Boise State University •
University of Idaho

Illinois

Elmhurst College
Lake Forest College
Monmouth College
North Park University
Southern Illinois University
University of Illinois Springfield

Indiana

Ball State University
Butler University
Franklin College
Indiana State University
Indiana University-Purdue University Fort Wayne
Purdue University Calumet
University of Evansville
University of Southern Indiana

Iowa

Grinnell College
St. Ambrose University
University of Iowa
Upper Iowa University

Kansas

Benedictine College
Emporia State University
Fort Hays State University
University of Kansas
Wichita State University

NEW MEMBERS

In 2017 we welcomed
17 new member institutions
in 8 countries.

Kentucky

Bellarmine University
University of Kentucky
Western Kentucky University

Louisiana

Louisiana State University
Loyola University New Orleans
McNeese State University •
Northwestern State University of Louisiana

Maryland

Frostburg State University
McDaniel College •
Notre Dame University of Maryland
University of Maryland Baltimore County •

Massachusetts

Framingham State University
Hampshire College

Michigan

Michigan State University •

Minnesota

Augsburg University •
Hamline University
Macalester College

Mississippi

Millsaps College
University of Mississippi

Missouri

Missouri Southern State University
Missouri State University
Northwest Missouri State University
Truman State University
University of Central Missouri

Montana

Carroll College
Montana State University
Rocky Mountain College
University of Montana

Nebraska

Creighton University
Doane College
Nebraska Wesleyan University
University of Nebraska Lincoln
University of Nebraska Omaha

• *New member in 2017*

New Jersey

Rider University
Saint Peter's University

New Mexico

New Mexico State University

New York

Alfred University
St. Lawrence University

North Carolina

Appalachian State University
East Carolina University
Lenoir-Rhyne University
N.C. Agricultural and Technical State University
North Carolina Central University
North Carolina State University
Queens University of Charlotte
University of N.C. Asheville
University of N.C. Charlotte
University of N.C. Greensboro
University of N.C. Pembroke
University of N.C. Wilmington
Western Carolina University
Winston-Salem State University

North Dakota

North Dakota State University
University of Jamestown

Ohio

John Carroll University
Kent State University
Miami University
Shawnee State University
Wittenberg University

Oklahoma

Northeastern State University

Oregon

Willamette University

Pennsylvania

Carlow University •
Clarion University of Pennsylvania
East Stroudsburg University
Indiana University of Pennsylvania
Mansfield University of Pennsylvania
Swarthmore College
Ursinus College

“ The higher education experience should not be limited to classrooms or even specific campuses, and instead involve a broad and varied range of opportunities at home and particularly abroad.

KI-JEONG LEE, PH.D.

Professor of Linguistics & Vice President for International Affairs, Hanyang University
ISEP Board of Directors

Puerto Rico

Universidad del Este
University of Puerto Rico

South Carolina

College of Charleston

South Dakota

South Dakota State University

Tennessee

Austin Peay State University
East Tennessee State University
Maryville College
Middle Tennessee State University
Rhodes College
Tennessee State University
Tennessee Technological University
Tennessee Wesleyan University
University of Memphis
University of Tennessee Chattanooga
University of Tennessee Knoxville

Texas

Southwestern University
St. Edward's University
Stephen F. Austin State University
Texas A&M International University

Utah

Utah State University
Westminster College

Vermont

Northern Vermont University Johnson Campus •
Norwich University
University of Vermont

Virginia

Bridgewater College
Radford University
Randolph-Macon College
Roanoke College
Shenandoah University
University of Virginia's College at Wise
Virginia Commonwealth University
Virginia Tech
Virginia State University

Washington

Central Washington University
Gonzaga University
Pacific Lutheran University
Washington State University
Western Washington University
Whitworth University

West Virginia

Marshall University

Wisconsin

Beloit College
Edgewood College
Fox Valley Technical College
University of Wisconsin La Crosse
University of Wisconsin Stout

Wyoming

University of Wyoming

ADVANCING OUR COMMUNITY

2017 ISEP Conference: Advancing Inclusive Communities

The ISEP community thrives on collaboration and inclusion. In October 2017, we came together as a community to chart a course in advancing these important values. Our theme of advancing inclusive communities drew on our history of expanding access to study abroad, and focused our attention on how we can advance our mission together. We achieve greater and more meaningful success when we come together for our common goal of inclusive student mobility.

THE EVENT PROGRAM WAS COMPRISED OF:

20 SESSIONS

Sessions showed regional or institutional expertise, best practices and different collaborative pathways for finding solutions in the advancement of inclusive communities.

10 THINK TANKS

These peer led, thought-provoking discussions encouraged participants to share their industry expertise to reach outcome-based solutions.

6 PLENARIES AND RECEPTIONS

Plenaries and receptions brought experts together, engaging participants in discussions on how we can work together to advance inclusive communities.

6 LEADERSHIP DIALOGUES

Leadership dialogues convened topic experts to challenge senior leaders to consider issues from a more dynamic perspectives or different paradigms.

4 WORKSHOPS

Workshops were hands-on interactive trainings that produced real-time takeaways and resources to be implemented once participants returned to their institution.

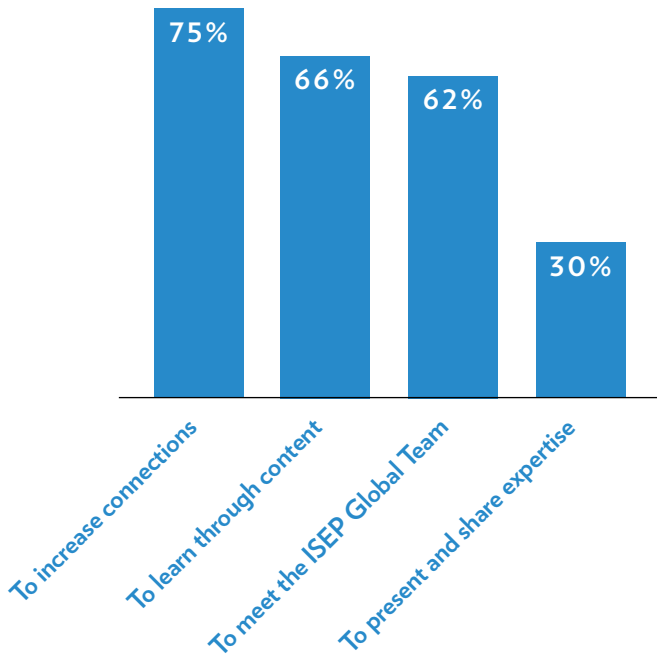


John Lucas ISEP President and CEO



ISEP Global Office team members: Nancy Campbell, Kiara Taylor, Liz Sinclair

WHY DID YOU PARTICIPATE IN THE ISEP CONFERENCE?



“ The ISEP Conference is small and intimate so you have a chance to forge strong connections with colleagues. The session quality is also excellent and exceeds the quality of other regional and national conferences.”

STEPHANIE TIGNOR

Director of Education Abroad,
Virginia Commonwealth University



ISEP members: Josh Moore, Beloit College; Jorge Joglar, University of Puerto Rico; Luis Irizarry Ramirez, University of Puerto Rico



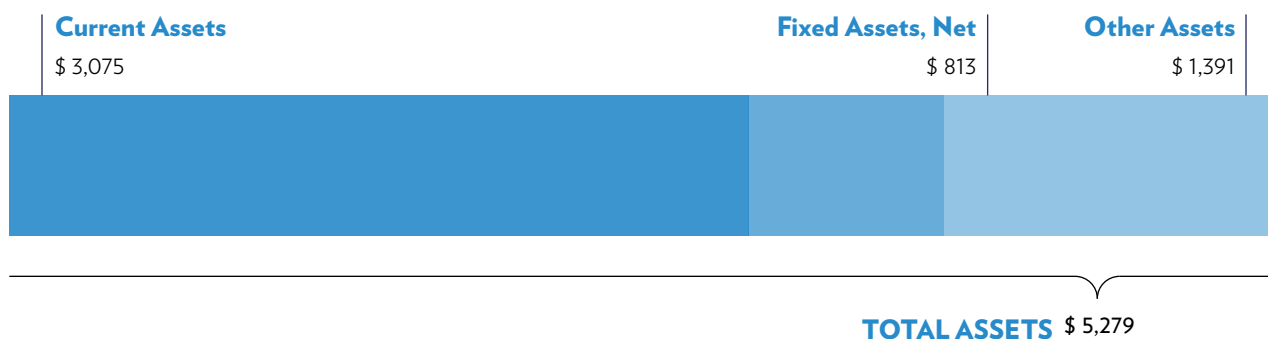
Alyson Grunder, U.S. Department of State; John Lucas, ISEP; Amy Rutherford, Education New Zealand; Jennifer Lawson, U.S. Department of State

FUNDING OUR COMMUNITY

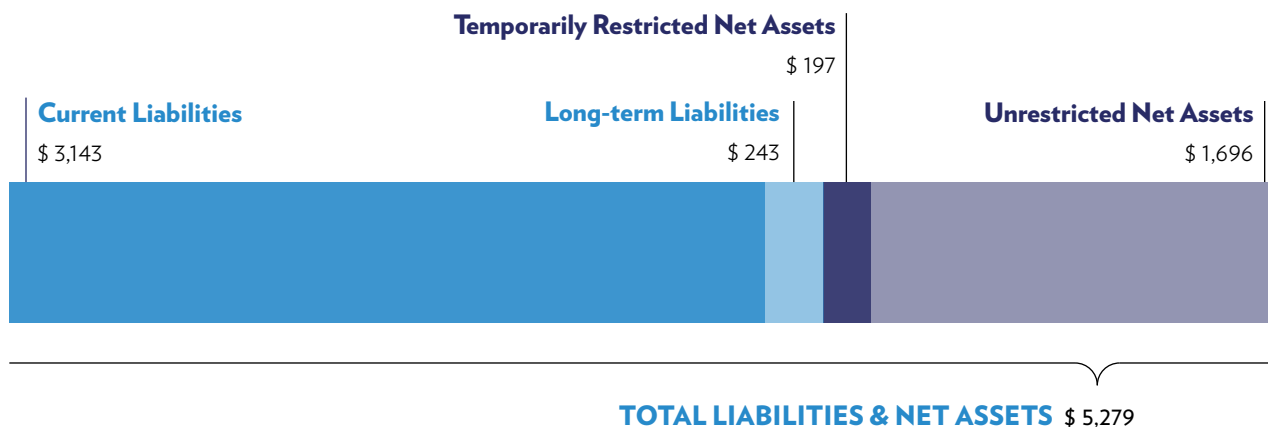
Statement of Financial Position

As of June 30, 2017, amounts are in thousands

ASSETS



LIABILITIES & NET ASSETS



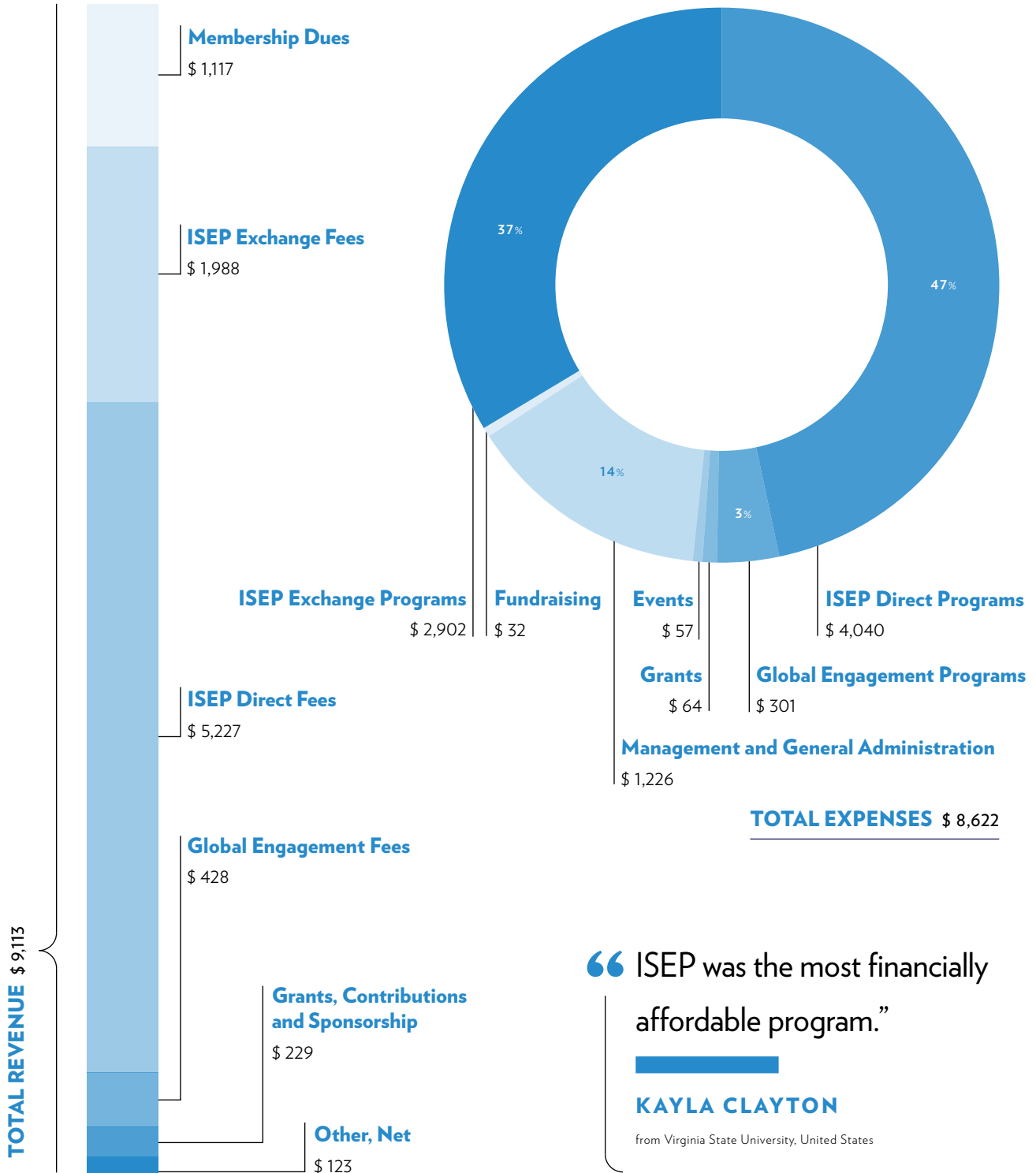
These financial statements were extracted from ISEP's June 30, 2017 financial statements, which were audited by Gelman, Rosenberg & Freedman, Certified Public Accountants.

Statement of Financial Activities

For the year ended June 30, 2017, amounts are in thousands

REVENUE

EXPENSES



“ ISEP was the most financially affordable program.”

KAYLA CLAYTON

from Virginia State University, United States

OUR ENGAGED COMMUNITY

ISEP COUNCIL OF ADVISORS: 2017-2018

CHAIR:

Kirsten Sheppard (2018)

Director, International Education
Maryville College

María Soloeta (2018)

Director, Department of International
Cooperation
Universidad del Salvador

Jennifer Gay (2020)

Director of International Programs,
Coordinator of National Student Exchange
Fort Lewis College

CHAIR-ELECT:

Cédric Guern (2019)

ISEP Coordinator
Université de Caen Basse-Normandie

Inger Niska Ekblom (2019)

International Coordinator
Luleå University of Technology

Alisa Meador (2020)

Director, International
Partnerships & Exchanges
The University of Tennessee, Knoxville

Kelly Chiu (2018)

Executive Secretary and Director, Academic
Exchange Affairs Division
Providence University

Paivi Halttilahti (2019)

Senior Coordinator
University of Eastern Finland

Karen Crolla-Barker (2020)

International Partnerships and
Study Abroad Manager
University of Central Lancashire

Stephanie Escobar (2018)

Senior Education Abroad Advisor
Agnes Scott College

Greg Huff (2019)

Manager, Student Mobility
Massey University

Cornelia Janus (2020)

Coordinator of Special Programs
Philipps-Universität Marburg

Kaboyaone Hiri-Khudu (2018)

Deputy Director, Office of International
Education & Partnerships
University of Botswana

Miko McFarland (2019)

Executive Director of
Education Abroad & Exchanges
University of Kentucky

Evan Lohmann (2020)

Assistant Director, Education Abroad
Appalachian State University

Wendy L. Martinec (2018)

Director, International
Partnerships and Services
La Trobe University

Stephanie Tignor (2019)

Director of Education Abroad
Virginia Commonwealth University

Colin Moravec (2020)

Study Abroad Advisor
Montana State University

Robert Carolin (2020)

Executive Director and Associate Dean
Office of Global Education, California State
University San Marcos

Léa Senn (2020)

Head Manager of Inbound Programs and
International Communications
Università Cattolica del Sacro Cuore

ISEP BOARD OF DIRECTORS: 2017-2018

CHAIR:

Heidi Gregori-Gahan* (2021)

Assistant Provost

Center for International Programs,
University of Southern Indiana

Dr. Harvey Charles (2020)

Dean & Vice Provost for International
Education & Global Strategy
University at Albany, SUNY

William Clabby (2020)

Associate Vice President for Global Initiatives
St. Edward's University

SECRETARY:

Keith Clausen* (2020)

CEO

Envisage International Corporation

TREASURER:

Stephen Connelly* (2020)

Director

GlobalEd Services

Dr. Waded Cruzado (2019)

President

Montana State University

PAST CHAIR:

Dr. Everett Egginton* (2019)

Professor Emeritus & former
Dean and Vice Provost

International & Border Programs,
New Mexico State University

Dr. Peter L. Gess (2018)

Associate Provost for Engaged Learning
& Director of International Programs

Hendrix College

VICE CHAIR:

Dr. Madeleine F. Green (2019)

Senior Fellow

International Association of Universities
& NAFA: Association of International
Educators

Dr. Susan Gronbeck-Tedesco (2019)

Executive Director, International
Program Development

University of Kansas

Dr. Margaret Heisel (2019)

Research Associate

Center for Studies in Higher Education,
University of California Berkeley

Dr. Selma Hepp (2019)

Housing Economist, Chief Economist &
Vice President Business Intelligence

Pacific Union International, Inc.

Dr. Hsiu-Zu Ho (2020)

Professor & Associate Dean

University of California
Education Abroad Program

Dr. John K. Hudzik (2020)

Professor and NAFA Senior
Scholar for Internationalization

Michigan State University

Dr. Bertlinde Laniel (2018)

Associate Professor of
Political Philosophy & Semantics

Université Jean Monnet de Saint-Etienne

Dr. Ki-jeong Lee (2020)

Professor of Linguistics & Vice
President for International Affairs

Hanyang University

Daniela Locreille (2019)

Independent Education
Consultant and Career Coach

Dr. Edilio Mazzoleni (2018)

Director

UCSC International - Cooperation, Mobility
& Internationalization, Università Cattolica
del Sacro Cuore

Dr. Vianne Timmons (2019)

President & Vice Chancellor

University of Regina

Dr. Juan Alejandro Tobias (2019)

President

Universidad del Salvador

Sanford J. Ungar (2020)

Director, Free Speech Project,
Georgetown University

Former President, Goucher College

EX-OFFICIO, COUNCIL OF ADVISORS CHAIR

Kirsten Sheppard (2018)

Director, International Education

Maryville College

EX-OFFICIO, COUNCIL OF ADVISORS CHAIR-ELECT

Cedric Guern (2018)

ISEP Coordinator

Université de Caen Basse-Normandi

* Executive Committee Member

ISEP GLOBAL OFFICE TEAM

EXECUTIVE

John Lucas, Ph.D.

President and CEO

A.E. O'Brien

Chief Financial Officer

Kristen Aguto

Vice President | Member Relations

Nancy Campbell

Vice President | Enrollment Management

STUDENT ENGAGEMENT

Alex Proimos

Director | Student Engagement

Jacob Gross

Student Engagement Officer |
Great Lakes & Northeastern U.S.

Kelsey Prima

Student Engagement Officer |
Southeastern U.S.

Kevin Yochim

Student Engagement Officer | Western U.S.

ADMINISTRATIVE

Anna Wlodarczyk

Director of Human Resources, DHR,
SHRM-CP

Karlene Masters

Executive Assistant & Board Liaison

Samantha Batchelor

Senior Accountant & Coordinator of
Student Insurance Program

Ron Cranston

Senior Accountant

MEMBER RELATIONS

Clayton Harrington

Director of Member Relations | United States

Pablo Ulloa-Perez

Director of Member Relations | Africa,
Europe, Latin America & the Middle East

Alexandra Kahn- Johnston

Program Manager |
The Americas & Southern Europe

Jessica Miller

Program Manager | Africa,
Asia, Oceania & the Middle East

William Pope

Program Manager | Europe

Michael Alijewicz

Student Success Officer & ACLS Public Fellow

Dawn Koban Hewitt

Senior Advisor and Consultant
for Australia & New Zealand

ENROLLMENT MANAGEMENT

Anthony Ciero

Student Advisor | Asia & Oceania

Gretchen Cloutier

Student Advisor | Americas & Southern Europe

Matt Merlene

Student Advisor | Central Europe & the U.K.

Liz Sinclair

Student Advisor | Africa, Belgium, France,
Netherlands, Northern Europe & the Middle East

Jessica O'Brien

Program Operations Manager & SEVIS Specialist

Ayesha Gowie

Program Assistant

Maribel Shilling

Program Assistant

COMMUNICATIONS & MARKETING

Mary Catherine Chase

Director of Communications
& Strategic Partnerships

Chris Brown

Graphic Designer & Creative Specialist

Ariel Grant

Social Media & Content Specialist

Kiara Taylor

Communications Intern

TECHNOLOGY

Marc Shue

Director | Technology

Alexander Muchnik

Computer Systems Engineer

Ravi Batchala

WebIS Help Desk &
Product Support Specialist

Nicolas Rivera

ASP.NET Web Developer

OUR SUPPORTIVE COMMUNITY

SCHOLARSHIP SPONSORS

These partners provide support for ISEP student scholarships, programs or program development.

THE ANNETTE KADE FUND

supports scholarships for students from U.S. ISEP member institutions planning to study in a French or German-speaking country.

KANSAI GAIDAI UNIVERSITY

provides merit scholarships for ISEP students who attend the university for a semester or full year program on ISEP Direct and meet the scholarship criteria.

MASSEY UNIVERSITY

offers two types of scholarships to ISEP students attending the university on ISEP Direct programs. One is for a semester or full year program and another is for the National Expedition and Internship summer program.

EVENT SPONSORS

DIAMOND

Embassy of France

GOLD

ISEP Australia: CQUniversity Australia, Deakin University, La Trobe University, University of Technology Sydney, Western Sydney University

SILVER

Agnes Scott College
Institute of International Education
KeynectUp
The PIE
ViaTRM

BRONZE

IEES-ASRM, Inc.
P3 Mental Health
Universidad del Salvador

CHAMPIONS

Education New Zealand
Envisiage International
Hanyang University
ISEP France
ISEP New Zealand: NMIT and University of Auckland
University of Regina
University of Southern Indiana
Whitworth University

COLLABORATORS

Université de Lausanne
University of Essex

ADVOCATES

CEDEI/Universidad Casa Grande
GlobalEd Services
Massey University
Montana State University
Providence University
Universidad Americana
Universidad de Monterrey
University of Albany SUNY
University of Kansas
The University of Tennessee, Knoxville
UPAEP University

ALLIES

Dominican University of California
Fundação Armando Álvares Penteado
Instituto Tecnológico y de Estudios Superiores de Occidente

DONORS

Bradley Adams	Everett and Wynn M. Egginton	Carri Orrison
Christopher Adams	Mary Helen Espinosa	Kelsey Prima
Kristen Aguto	Tiffany Gabbard	Alex Proimos
Alex Alijewicz	Peter Gess	Truman Scarborough
Katie Alijewicz	John Gossart	Gordon Schaeffer
Michael Alijewicz	Ariel Grant	Kirsten Sheppard
Richard Bailey	Madeleine F. Green	Karen Shilling
Samantha Batchelor	Heidi Gregori-Gahan and Daniel Gahan	Mariel Shilling
Amanda Batista	Susan and John Gronbeck-Tedesco	Maria Soloeta
Chris Brown	Jacob Gross	Vianne Timmons
Inger Bull	Clayton Harrington	Will Tregidga
Joseph Burrow	Hsiu-Zu Ho	Alaric Trousdale
Andrés Camilo Mendoza	Lena Jakubowski	Sanford J. Ungar
Gini Campbell	Sara Kinerson	Jennifer Vogt
Nancy Campbell	Daniela Locreille	Susan Wallace
Anthony Ciero	Jules Lounibos	Caylie Zidwick
Bill Clabby	John S. Lucas	Anonymous (7)
Keith Clausen	John F. Maisto	
Gretchen Cloutier	Wendy Martinec	
Karen Cloutier	Karlene Masters	
Christopher Cooper	Alisa Meador	
William Cressey	Matthew Merlene	
Kebokile Dengu-Zvobgo	Velvenia L. Minor	
Jill Doctor	A.E. O'Brien	
Rosie Edmond		

IN MEMORY OF TONY ADAMS:

Dr. Blaine Brownell and Mardi Brownell

“ I am thrilled to hear that communities exist to support students and experiences. As a student, I never really thought of the people behind the scenes who supported my experience.

BRADLEY ADAMS

Business Development Manager,
KeynectUp

“ For me, learning Spanish in a host culture is so important because language is more than a tool for communication, it is a cultural identity, a history of its people and a gateway to understanding. Now, for the first time, I am proud of my heritage and my culture. I am excited to study abroad in Nicaragua and not only learn Spanish, but learn about my culture as well.”

RYAN TORRES

From Fort Lewis College in the U.S. studied abroad at Universidad Americana in Nicaragua and is a 2017 ISEP Founders Fellow

Ryan Torres is one of 22 students who received an ISEP Community Scholarship or ISEP Founders Fellowship in 2017. While each of these students look forward to the challenges inherent to living and studying in a new country, for many their ISEP program is one part of a larger plan.

Students receive an ISEP Community Scholarship or ISEP Founders Fellowship because of the generosity of our community. Join the cause by contributing to ISEP scholarships today to support the goals of future ISEP students.

DONATE TODAY

www.isepstudyabroad.org/donate

ISEP

is a non-profit educational community dedicated to helping students overcome financial and academic barriers to study abroad. Since 1979, we have sent over 56,000 students on transformative, life-changing study abroad programs, and have grown to include 339 institutions in 53 countries.

We directly enroll our students into classes at our member universities because we value the personal transformation that comes from living and learning alongside locals.

Through ISEP, students build real connections and gain a true understanding of what it is like to live in another culture. By utilizing existing academic resources at our member universities, we are able to provide students access to affordable, high-quality programs, that in return, help develop culturally sensitive skill sets needed for today's global workforce.



[isepstudyabroad.org](https://www.isepstudyabroad.org)

info@isep.org | 703-504-9960
1655 N. Fort Myer Drive, Suite 400
Arlington, Virginia 22209 | United States

